



A.A.T.C.
Marmi e Graniti
Italy





Index

Company	p. 4
Our philosophy	p. 6
Consulting	p. 10
Material selection	p. 12
Technical office	p. 15
Quality test	p. 16
Inspection	p. 19
Logistics	p. 20
International projects	p. 22

Company

A.A.T.C. and Co. Srl has a long history of large scale projects since 1995.

The company made the decision to differentiate itself from other natural stone retailing businesses by focusing primarily on projects and making it its main strength. Today it is A.A.T.C. and Co. Srl's pride to say that we are trusted worldwide due to our impeccable fine work, with demand of all sorts of types.

We work closer with construction groups and architect and design studios because we are always thrilled to satisfy all of their ideas and see their projects come to life with our materials.

Our locations cover an overall storage showroom area of 40,000 sqm. The company has a very wide range of materials such as marble, granite, limestone, quartz stone, travertines, and semiprecious stones.

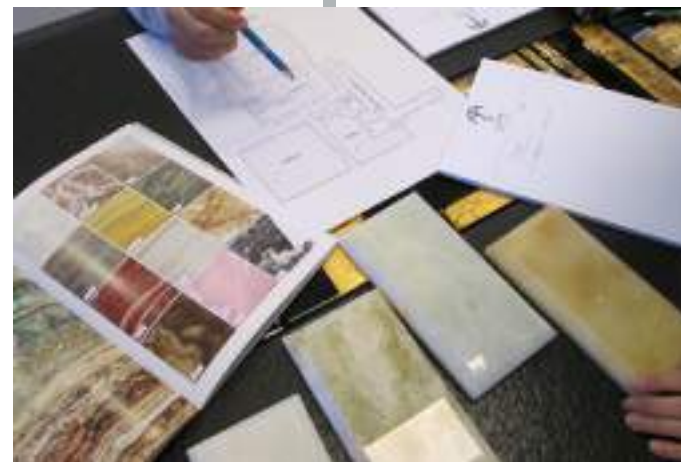


Our philosophy

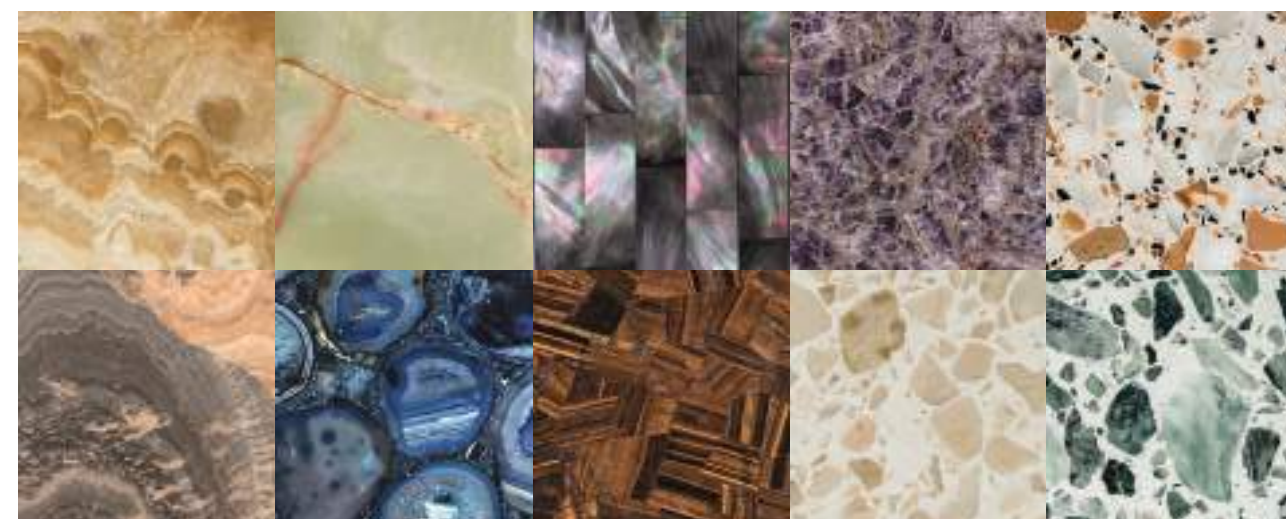
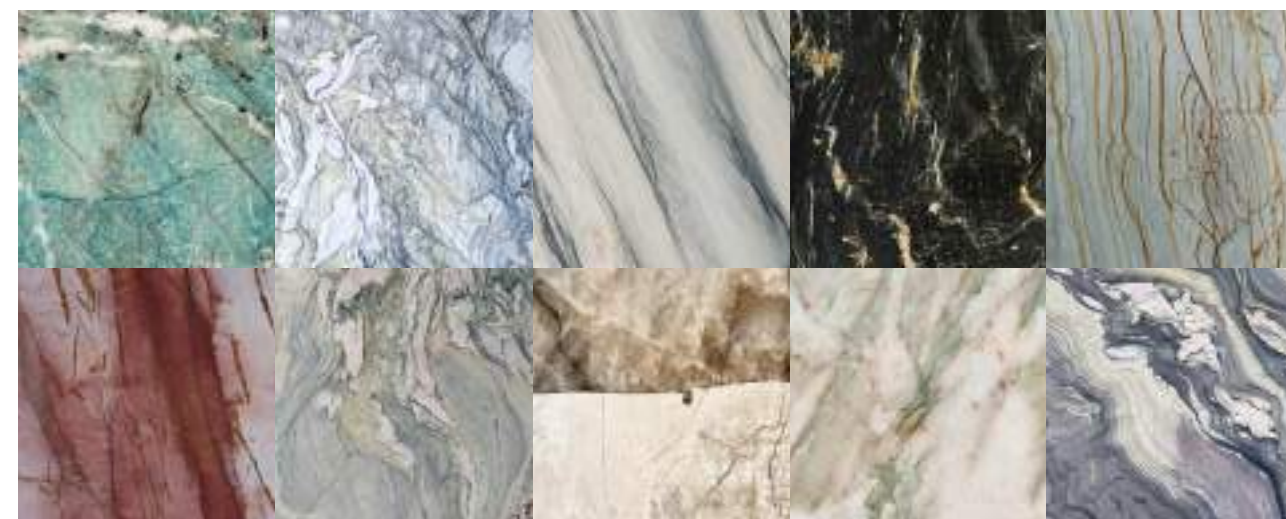
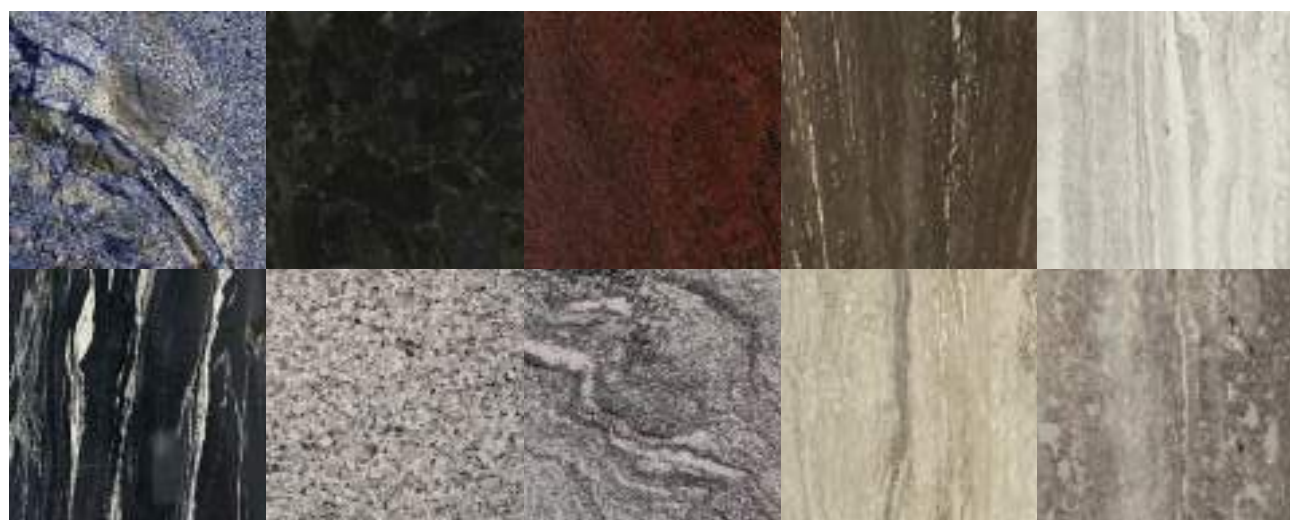
Empowering our clients
to fulfill their vision with
our natural stone.

Consulting

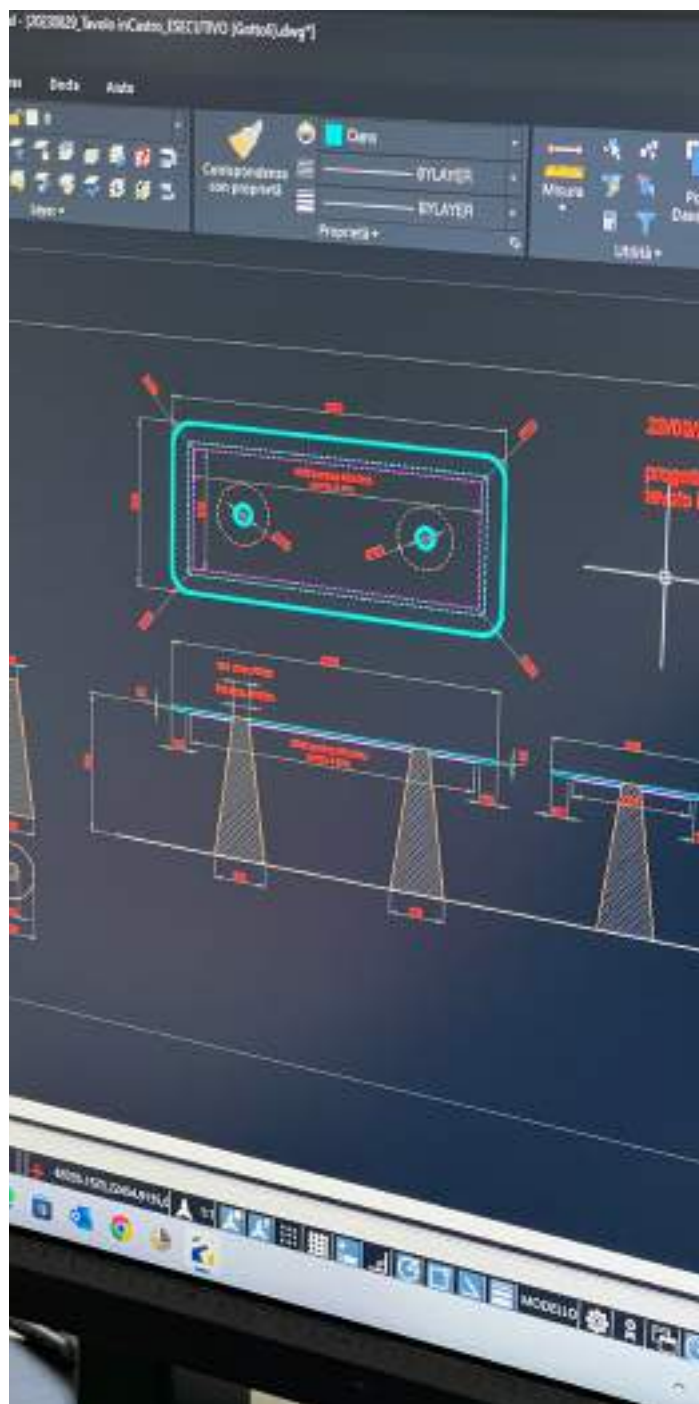
A.A.T.C and Co. Srl is a skilled and qualified team of people that can assist and provide practical solutions to the clients needs and concerns from choosing which stone best suits the project, to handling logistics, and reactively solve issues that may happen on sites.



Material selection



Discover all our materials in our online inventory, updated in real time



Technical office

The technical office develops shop drawings based on as built from sites in close collaboration with the clients. Once drawings are approved, cutting lists will be made to be sent into production. Once everything is packaged according to approved drawings and materials, the technical team will produce packing lists for each crate along with its respective drawings.



Quality test

Our team verifies the quality of the project throughout the process by consistently comparing the cut to size dimensions as well as stone quality to the drawings and control samples that have been approved by the client.





Inspection

The inspection phase is crucial to show the mock-up of the work to the client. This preparation allows the client to view the material before it is installed on-site and verify colors, finishes, and specifications that are difficult to assess on paper.



Logistics

Managing the logistics is a fundamental aspect for the success of a project, especially when it comes to international transportation. Timing and handling are often influenced by various external factors, therefore strategic planning, international coordination with reliable partners, customs procedures management, warehouse management during loading and unloading, shipment tracking, and the handling of unexpected situations are crucial. Communication must always be clear and precise.





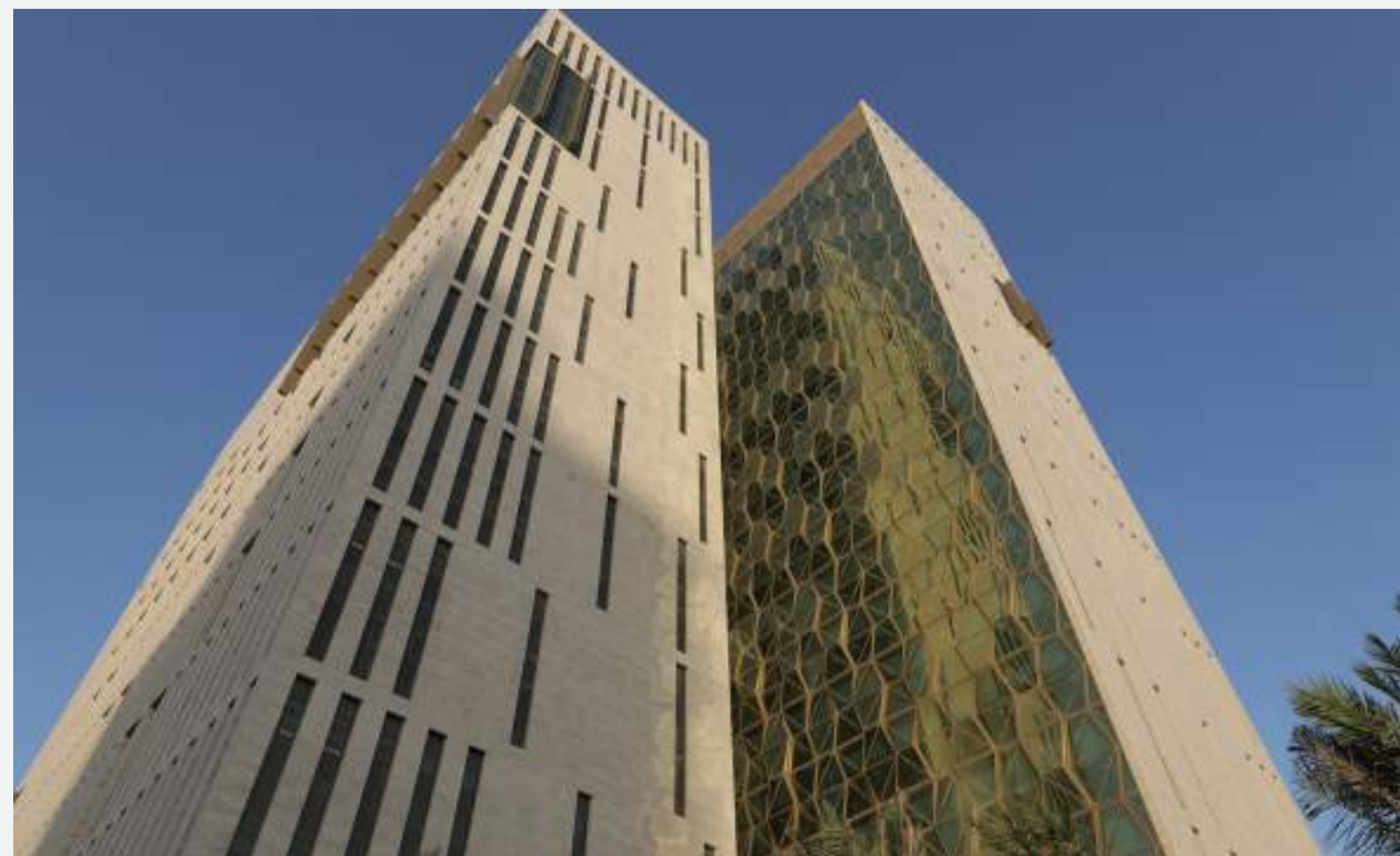
International projects

We manage international projects across various fields, providing personalized consulting to meet the most specific needs and the highest quality standards

Justice Palace in Kuwait

The Justice Palace in Kuwait, located in the capital city of Kuwait City, is an impressive complex that represents the importance of the judicial system in the country. This building features modern and functional architecture, designed to accommodate the various courts and administrative offices necessary for the legal system's operations.

With the external cladding entirely in travertine, the New Palace of Justice stands as an impressive architectural work. Its design integrates traditional Islamic motifs enriched by intricate geometric patterns.



Al Shaheed Park

Al Shaheed Park, located in the capital city of Kuwait City, was developed as a link between the city center and the suburbs. Initiated in 2013, the project, which spans approximately 220,000 m², has now reached Phase 3. It is the largest green space created in the Arab world and it's also known as the "Martyrs' Park," it narrates the history and culture of the country.

The floor, made after carefully selecting and processing materials for the outdoor urban context, is composed of colour games and asymmetrical shapes that discreetly accompany visitors with their brightness in all environments. Thanks to its size, the Park helps reducing air pollution and provides protection against sandstorms. The artificial lakes within the park also hold ecological value, serving as water reservoirs during the summer months.

A successful project with a promising future



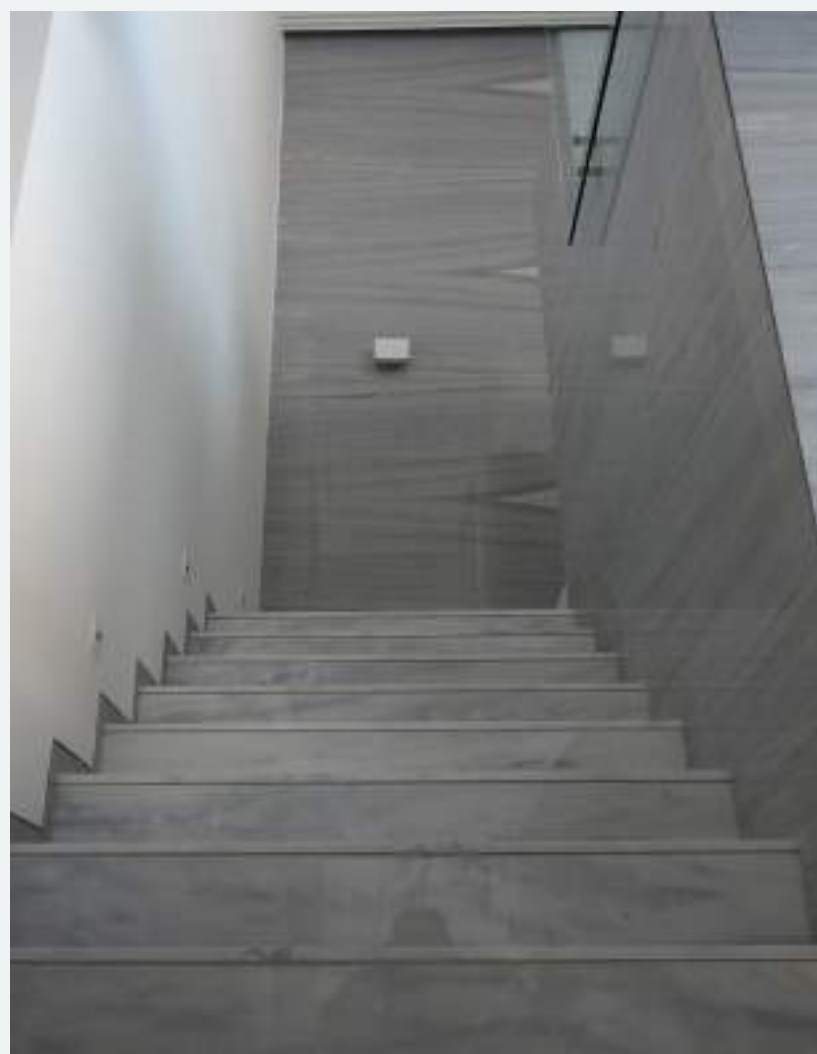
The Avenues Phase IV

When we consider our designs, we are captivated by the wonderful combination of colors and design skills that allow us to maximize every scenario. When the project is also structured across different levels and with a unified scale, the composition becomes even more impressive. The architecture of The Avenues - Phase IV is characterized by contemporary design that seamlessly integrates aesthetics with functionality. The use of open and bright spaces creates a welcoming and dynamic environment. High ceilings and expansive open areas enhance the sense of space and facilitate the flow of visitors. In the main areas and luxury districts the flooring is made of high-quality stone materials. These materials not only offer an elegant and refined appearance but are also extremely durable and easy to maintain. The floors feature inlays that bring new life to the concept of classical art, a theme that has always been present in human life. Also the walls and some decorative elements are clad in natural stone, providing a sense of solidity and connection with nature.



Residential solutions

From a bright light exterior to an interior where the grey stone tells its story in every room.
The book-matched marble in delicate shades decorates the rooms according to their use, reinforcing or attenuating the dark light contrast.



Office solutions

High end interior designers have been called to action to search and select the best quality natural materials. The refreshing white next to the elegant grey give life to the most luxurios villas in the world.



Katara theatre Qatar

Since ancient times marble has been used for great works which still remain and that have marked the passing of time. Thanks to the strength and resistance of the materials, the great works have combined the Greek classicism with the traditional Islamic characteristics.



Portfolio

Following some of our important reference projects done:

KUWAIT

Al Saleh Villa
Altarkait Villa
Al Bahar-Al Ghunaim Tower
Al Bahar Villa
Al Ghunaim Office Tower
Al Hamra Vip Lounge
Al Merry Villa
Al Nafsi Tower
Al Asfour Villa
Al Saif Palace
Al Saif Villa
Al Sahli Villa
Al Sedeeq Neighbourhood Center
Al Sedeeq Villa
Al Shaheed Park II and III
Al-Muhallab Complex
Bader Al Mulla Showroom
Bayan Palace Conference Hall
Burj Alshaya
College Of Science & Faculty Club
Elkazemi Villa
Four Seasons Hotel
Grand Mosque
Hessah Al Mubarak
Immigration Building
Intercontinental Hotel Kuwait
Jabriya Villa
KAFCO HQ Building
KDCC Tower
Kuwait Airport Lounge
Kuwait Municipality New Building
Kuwait National Library
Mado Villa
Nato - Kuwait ICI Regional Center
New Palace of Justice
PAAET Buildings
Public Authority for Applied Education
& Training at Shuwaikh Campus
Rotana Hotel

Rumauthija Sala
Sheraton Hotel - Internal Renovation
Shuwaikh New Campus Projects
Specialized Eye Center at Al-Shaab Area
The Avenues - Phase III
The Avenues - Phase IV
Villa Almaousharji
Villa Al Hashash
Villa FKM
Wataniya HQ Building

KAZAKISTAN

Commercial City Center - Astana
Foreign Ministry
Hilton Hotel
Presidential Palace - Astana
Residential Building
Theatre Astana

JORDAN

Al Alraya Palace
Al Royal Palace
Astra Plaza
Crowne Plaza Hotel - Dead Sea
InterContinental Hotel - Aqaba
Kempinski Hotel
Le Royal Hotel - Amman
Manaseer Palace
Marriott Hotel
Meridien Hotel – Amman
Sheraton Amman
Zara Project

SAUDI ARABIA

Al Fozan Resort
Al Naghi Village
Al Salama Hospital
Al Rashid Villa
Babtain Villa - Jeddah
Jeddah Airport Ext.

Juffali Project
Laylati Project
Mouawad Boutique - Jeddah
Mouawad Village
Sabin Jubail Main Building
Sharbatly Village
St. Regis Hotel Jeddah
St. Regis Hotel Riyadh

LEBANON

Le Royal Hotel
Lebanon Casino
Mouawad Village
Sara Residence

QATAR

Amin Kush Villa
Al Bakir Villa
Al Sadd Development Tower
Katara Cultural Village
Khalid Villa
Millennium Hotel Doha
Olympic Sports Center

USA

Building Bank
Chopard Manhattan
Commercial Center - Naples, Florida
Garden Building - Brisbane, California
Jewelery Boutique - New York
Oil Building Palace
Raffles Hotel Boston – Long Bar
Winston Tower - Miami, Florida

ITALY

Bikkembergs Showroom
Chopard Milano
Dolce e Gabbana Boutique
Marina Rinaldi Boutique
Max Mara Boutiques

SWITZERLAND

Chatila Boutique
Mouawad Boutique
Olivella Hotel Lugano - Lugano

UNITED KINGDOM

Harrods
Mandarin Oriental Hyde Park, London
Max Mara Boutique

BAHRAIN

Bahrain Islamic Bank
Merchant Hotel

MOROCCO

La Mamounia Hotel – Marrakech
Royal Mansour - Casablanca
Prince Sultan Palace - Agadir

FRANCE

Balzac Hotel – Paris
Château les bordes
Palace d'Iena - Paris
Ville - Cannes
Ville - Divonne

AUSTRIA

Max Mara Boutique - Innsbruck

EGYPT

Movenpick Hotel Sharm El Sheikh

CHINA

Hangzhou Villa



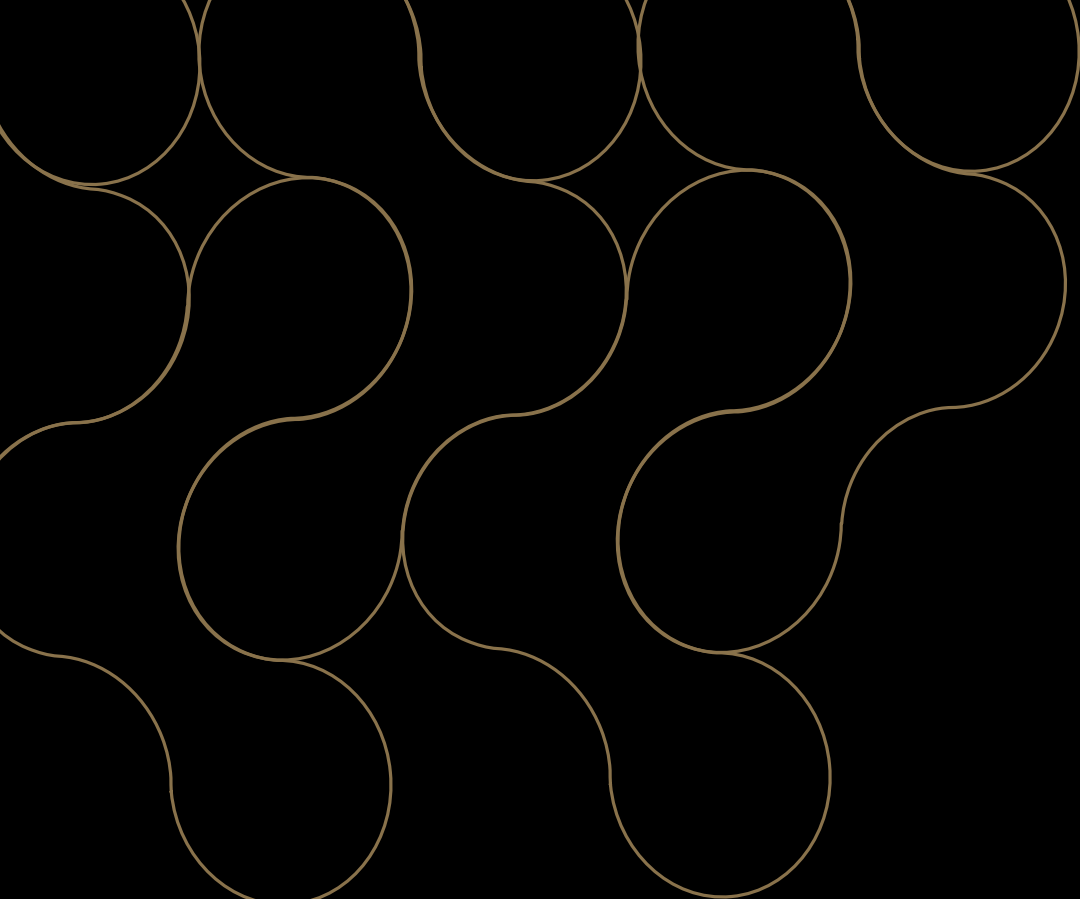
Contact us

Ideas get combined
with technology, nature,
thoughts, emotions,
feelings.

Tel / +39 0456861627

Mail / info@aatc.it

www.aatc.it



Office and Showroom 1

Via Napoleone 8,
37015 / S. Ambrogio di
Valpolicella [VR] / ITALY

Tel: +39 0456861627
info@aatc.it
www.aatc.it

Showroom 2

Via Palazzina 1122A,
37020/ Volargne [VR] / ITALY

